

WWA Annual Conference & Exposition

2009 Meter Madness Competition

Thursday September 24th, 2009

3:30PM in the Exhibit Hall



Don't miss this exciting event!

2009 METER MADNESS CONTEST REGISTRATION



2009 Meter Madness Competitor:

We are excited for you to join us at the 2009 Meter Madness Contest. This is an individual timed competition to test your skills in assembling a meter.

The contest will take place on Thursday September 24th, 3:30PM at the Kalahari Resort in Wisconsin Dells, Wisconsin, during the WWA Annual Conference and Exposition.

Please complete the attached Official Entry Form.

Once registered, you will receive a meter from Sensus Meter Company for practice. The sooner you register, the sooner you will receive your meter! Sign in will also take place at the Meter Madness booth in the main lobby of Exhibit Hall during exhibit hours of 10:30am – 3:30PM on Wednesday, September 23rd, or at 8:30AM on Thursday September 24th at the Exhibit Hall competition area.

TO ENTER:

1. Complete the Official Entry Form.
2. Fax, email or US Mail entry form to Dave Goldapp.
3. Entry forms must be received by August 24th to receive Meter Madness competition T-Shirt.

Fax: 414-286-8888

Email: dave.goldapp@milwaukee.gov

US Postal address: Dave Goldapp
Milwaukee Water Works
3850 N. 35th Street
Milwaukee, WI 53216

QUESTIONS? CALL DAVE at 414-286-6301
Or Ross at 414-286-6302

Please be set up and ready to participate 30 minutes (3:00PM) prior to start of competition.



2009 WWA METER MADNESS CONTEST
Thursday September 24, 2009 @ 3:30PM
Kalahari Resort
Wisconsin Dells, Wisconsin
OFFICIAL ENTRY FORM

Representing: _____

PLEASE PRINT!

Name of Competitor: _____

Employer: _____

Job Title: _____

T-Shirt Size: _____

Number of Years With
Employer: _____

Address: _____

Phone Number: (____) _____

Fax Number: (____) _____

Email Address: _____

Email this form to: dave.goldapp@milwaukee.gov

or

Fax to the attention of Dave Goldapp @ 414-286-8888

or

US Postal Address

Dave Goldapp
Milwaukee Water Works
3850 N. 35th Street
Milwaukee, WI 53216

Due Date: August 24th, 2009

QUESTIONS?? CONTACT

Dave Goldapp (414) 286-6301
Ross Brzycki (414) 286-6302

Rules and Regulations

2009 METER MADNESS CONTEST

INTRODUCTION

I-1 The Meter Madness Competition ("Competition") is an individual Competition. Each qualified participant ("Competitor") is solely responsible for his/her performance.

I-2A The Utility with a returning National Champion may compete at the Section level with a different employee from the same Utility. That competitor will be eligible to represent the Section at the National level in addition to the returning National Champion.

I-2B Each Section is permitted to send two representatives to the National level or three should the returning National Champion represent that Section. **It shall be the responsibility of the Chair or his/her designee in each Section to determine who their representative(s) will be.**

I-2C The Host Utility may enter a contestant in addition to any section representatives or returning National Champion. Should the designation of Host Utility apply to more than one utility then those utilities as a group must select a single contestant to act as the representative of the Host Utilities.

I-2D International Competitors – International competitors who are interested in competing may do so as a representative of their country. Two representatives per country will be permitted and will be treated as though they were Section representatives.

Should more than two competitors from one country request to compete, the available positions will be filled on a first-come, first served basis. Although two representatives from a single utility may be permitted, should three competitors register to compete (two being from a single utility), priority will be given to the competitor from another utility in the interest of fairness.

It is the intention of the Meter Madness sub-committee to provide opportunities to compete for all interested AWWA members. It is not our intention to implement a "world cup" type event. We welcome international competitors to the Meter Madness contest, however due to the considerable cost of international travel; AWWA will not be able to reimburse international competitors for travel and accommodations should they return as national champion. Additionally, AWWA and the Meter Madness sub-committee are not committing to participate in potential international Meter Madness competitions outside the continental United States or Canada, should a contest be developed. This does not apply to Canadian, Mexico and Puerto Rico Section representatives as they are official Sections of AWWA.

I-3 The Competition is a measure of an individual's skill at assembling a meter quickly, totally, and accurately. All parts will be assembled in proper manner and the reassembled meter shall be tested by the Judges for ability to meter water and for water leakage from the meter.

I-4 This is a test of skill for individuals. To facilitate a large number of Competitors, groups of four (4) to six (6) persons may be placed together in a single round. The START will be simultaneous for all Competitors in that round, but each Competitor will be timed separately by an Official to record his/her raw time in assembling the meter.

I-5 Each individual Competitor will be required to completely assemble a water meter commonly utilized by water utilities for residential customers. The event is timed with multiple Competitors assembling the meters simultaneously.

I-6 Each Competitor will be furnished with a bucket, or other suitable container, containing the completely disassembled meter. In addition, the contents of the bucket will contain three (3) to six (6) miscellaneous unrelated parts, metallic and non-metallic items from other types of meters. This will ensure that the Competitor must be thoroughly familiar with all parts of the meter he/she is assembling. All Competitors shall receive exactly the same number and type of extraneous parts for their turn.

I-7 A time period of no more than five (5) minutes shall be allowed for each Competitor to complete his/her turn. TWO TURNS shall be allowed for each Competitor with the faster of the two times being used for their Official Time.

I-8 Each individual Competitor shall be ready to compete and at his/her assigned station ten (10) minutes prior to their assigned time. Competitors absent from their stations at their scheduled time shall be assigned a new starting time or forfeit their turns at the decision of the Head Official.

I-9 Prior to the designated start time, each Competitor will assume a "ready" posture of their choice. The Head Official will count down to "GO" to initiate the Meter Madness event. EACH COMPETITOR ASSEMBLES HIS/HER WATER METER AND THEN RAISES HIS/HER HAND TO SIGNIFY HE/SHE IS FINISHED WITH THEIR TURN. All other Competitors in that round must continue their turns to complete assembly of the meter to have a qualifying time of record.

I-10 OFFICIAL TIME for the Competitors' turns will be the raw time to assemble the meter plus any penalty seconds the Judges deem necessary after testing the meter. The Competitor with the fastest OFFICIAL TIME registered in that heat/round shall be declared the winner of that heat/round.

I-10A Three Officials will time each contestant during each heat and the middle time of the three will be the official raw time.

I-11 The winner will be determined by the best "official" time as determined by a "head to head" heat following two preliminary rounds **and one semi-final round**. The fastest four "official" times from the first two preliminary rounds will be eligible to compete in the **semi-finals**. **The two fastest "official" times from the semi-final round will be eligible to compete for the championship. The fastest "official" time in the championship round will determine the meter madness champion.**

GENERAL

G-1 Meters shall be of the type complying with AWWA C700, "Cold-Water Meters - Multi-jet Type, Bronze Main Case." The size shall be 5/8" x 3/4". Meter manufacturer, **and** model, but will be announced each year in adequate time for individuals to practice with the meter prior to the contest.

G-2 Meters will be totally disassembled with the exception of the sealed magnetic drive assemblies and the registers. All meters utilized for the contest will be identical for all Competitors.

G-3 No Competitor will be allowed to examine the contents of the bucket prior to the start of the contest. A meter fully assembled may be examined by each Competitor if he/she chooses. Each bucket shall always contain the total parts required for complete assembly of the meter.

G-4 EXTRA METER PARTS - The total contents of extra parts shall be exactly the same for each individual, but shall consist of a minimum of three (3) extra meter parts. These parts may consist of duplicate parts for the meter or may be parts from other meters than the one used in the contest at the option of the host utility providing the contest assistance. The intent is to require the Competitor to thoroughly know the total parts required to reassemble the meter utilized in this competition.

G-5 The Competitor shall be positioned immediately in front of the bucket of parts on the table at the instruction of the Head Official just prior to the Start of the event. All necessary tools will be pre-positioned on the table alongside the bucket prior to the start. No meter parts may be handled by the Competitors prior to the Start of the event, but they will be allowed to position the tools where they want. Both hands must be empty and not touching any tool or bucket just prior to the Start of the event.

G-6 Tools for the event will be provided for each Competitor. The tools provided shall be:

1 - 1/2" Box End Wrench

1 - Flat-Head Screwdriver - 4" x 3/16"

1 - Special Tool (IF REQUIRED BY CERTAIN METERS)

G-7 There is no such thing as meter failure! All meters were received in good working order prior to the Meter Madness Competition. THE METER MUST REGISTER WHEN TESTED OR PENALTY WILL BE INCURRED.

A. All meters utilized in the Meter Madness Competition are new or nearly new and in perfect working condition prior to disassembly.

B. Any tools, equipment, and other supplies provided for this Competition that are broken will be considered to be broken by neglect of the individual and will not be replaced during that turn.

G-8 All work shall be conducted on a suitable size table to provide each of the Competitors adequate room to move about freely to assemble their meters without crowding. It is preferred, but not required, to have some type of partition between Contestants to secure their individual work.

G-9 The area for the Meter Madness Competition shall be large enough to accommodate all Competitors and their work areas. Equal space must be provided for each Competitor. Every effort must be made to provide equal work opportunities for all Competitors.

G-10 A clear area of no less than ten (10) feet in all directions around the tables shall be provided to allow the judges to roam freely in judging the Competitors. This clear area will also help to provide a safety area between the spectators and the Competitors to protect from any tools or materials that may accidentally slip from someone's grasp.

JUDGING

J-1 The officiating and supervision of each event shall be the responsibility of the Head Official who shall have extensive experience in water meter maintenance and total familiarity with the type and manufacturer of the meters to be used in the Competition. There shall be three officials for each of the Competitors, which could amount to 12 to 18. The number of Competitors for each round shall be limited to the space available for the Competitors to perform adequately or to the number of officials available for each round.

J-2 The officials shall be responsible for timing the events with the Head Official being the one to announce the START of each of the events. Each Competitor's time as recorded by the official, plus any penalties accrued, shall be used to determine the Official Time for each contestant. The Head Official shall be in charge of the Competition and after consulting with the other officials on any infraction of the rules shall make the ruling as required by the circumstances for any penalties to be assessed.

J-3 The Head Official shall see that all tools, materials, and Contestants are in the required positions prior to starting the event. She/he shall also ensure the work area is free from any obstructions or spectators.

J-4 The officials shall watch for safety violations during the actual events and shall see that all preparations for the events are accomplished in a safe manner.

J-5 No timing official will be assigned to a contestant who works for the same organization.

SAFETY

S-1 Normal water utility safety practices will be observed at all times during the Competition exercises. Any flagrant violations will be penalized by addition of time to the Competitor's raw time. The Head Official's decision is final on this rule. (This simply means NO throwing or careless handling of anything, tools or meter parts.)

PENALTIES

P-1 Various penalties will be assessed by the Head Official for any infraction of the rules as described herein or for any flagrant violation of normal safety practices.

P-2 The penalties will be in the form of a predetermined number of seconds added to the total time of the contestant's event time which will then be the OFFICIAL TIME of that event.

P-3 Penalties shall be (seconds):

- A. Leaking connection, barely oozing water and just discernable to the judges, (+4 each)
- B. Slow, obviously dripping connection, (+6 each)
- C. Squirting, continuous leaking connection, (+8 each)
- D. Safety violation, (+10 each)
- E. Meter not properly put together and a part too loose (other than the bottom plate bolts described in P-3G) or falls off, (+10 each)
- F. Meter fails to register flow through meter when tested, (+10)
- G. Bottom plate bolts can be loosened without a tool, (+10 each)

P-4 In the event of any disagreement with penalty decision, the Head Official's decision is final.

P-5 There will be NO INSTANT REPLAY allowed for reversing any decision after the Head Official has made a final determination on any infraction in these rules.

SPONSORS

S-1 Requirements for meter company sponsorship in the Meter Madness Contest.

The meter manufacturer must:

- A. is an associate member of AWWA.**
- B. exhibit at ACE.**
- C. be an active committee member (assist with the contest, attend the Committee meeting at ACE) for two years prior to being approved to sponsor the event.**
- D. is in business in North America for five years.**
- E. be willing to provide all meters for the nationwide competition.**

NOTE: This contest is officiated over by very competent officials who are striving for fairness in their judgment of the events so that all contestants are judged equally as possible. FAIR AND EQUAL TREATMENT FOR EACH AND EVERY CONTESTANT is the goal of this contest. There is no intention to provide anyone with an advantage.

Committee meetings are open to any person or company. Your volunteerism and support is encouraged and appreciated.

HAVE FUN!

METER MADNESS PENALTIES

Leaking connection, barely oozing water **(+4 each)**
Slow, obviously dripping connection **(+6 each)**
Squirting, continuously leaking connection **(+8 each)**
Safety Violation **(+10 each)**

Meter not properly assembled and a part too loose or falls off **(+10 each)**

Bottom Plate bolts can be loosened without a tool **(+10 each)**

THE JUDGES DECISIONS ARE FINAL

METER MADNESS PENALTIES

Leaking connection, barely oozing water **(+4 each)**
Slow, obviously dripping connection **(+6 each)**
Squirting, continuously leaking connection **(+8 each)**
Safety Violation **(+10 each)**

Meter not properly assembled and a part too loose or falls off **(+10 each)**

Bottom Plate bolts can be loosened without a tool **(+10 each)**

THE JUDGES DECISIONS ARE FINAL

METER MADNESS PENALTIES

Leaking connection, barely oozing water **(+4 each)**
Slow, obviously dripping connection **(+6 each)**
Squirting, continuously leaking connection **(+8 each)**
Safety Violation **(+10 each)**

Meter not properly assembled and a part too loose or falls off **(+10 each)**

Bottom Plate bolts can be loosened without a tool **(+10 each)**

THE JUDGES DECISIONS ARE FINAL

METER MADNESS PENALTIES

Leaking connection, barely oozing water **(+4 each)**
Slow, obviously dripping connection **(+6 each)**
Squirting, continuously leaking connection **(+8 each)**
Safety Violation **(+10 each)**

Meter not properly assembled and a part too loose or falls off **(+10 each)**

Bottom Plate bolts can be loosened without a tool **(+10 each)**

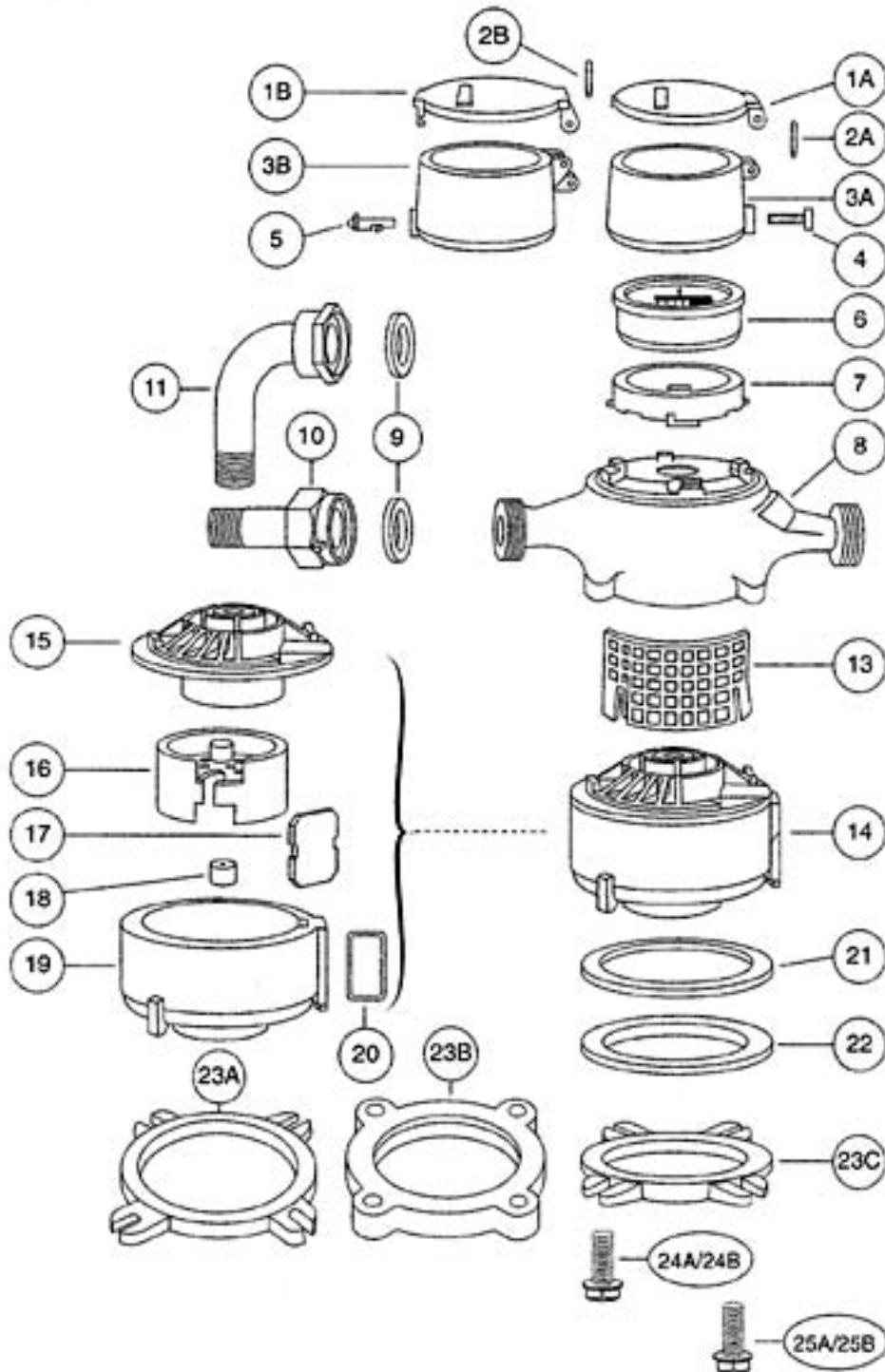
THE JUDGES DECISIONS ARE FINAL

SR 1^{1/2}" Water Meters

Sizes 5/8" through 1"

Notes:

Prices F.O.B. Factory – subject to change without notice and such discounts as market conditions allow. Complete factory repaired and exchange measuring chamber exchange programs are also available; see MMP data sheet PD-299 or consult local sales representative for details.



SR II® Water Meters

Sizes 5/8" through 1"

ILL. No.	Name of Part
1A	Register Lid - Bronze Ⓢ
1B	Register Lid - Plastic Ⓢ
2	Hinge Pin—Bronze Lid Ⓢ
2B	Hinge Pin—Plastic Lid Ⓢ
3A	Register Bonnet—Bronze Ⓢ
3B	Register Bonnet—Plastic Screw Ⓢ
3C	Register Bonnet—Plastic Pin Ⓢ
4	Tamper Resistant Screw Ⓢ
5	Tamper Detection Pin Ⓢ
6	Sealed Register Ⓢ
7	Register Retaining Ring
8	Maincase Ⓢ
9	Connection Gasket—Leather
10	Connection—Straight 1/2 set
11	Connection—Bent 1/2 set
13	Strainer
14	Measuring Chamber, Complete, Tested (Rockyn®)
15	Measuring Chamber Top Rock Assembly with Drive Dog and Magnet (Rockyn®) Ⓢ
16	Piston Ⓢ
17	Division Plate Ⓢ
18	Control Roller Ⓢ
19	Measuring Chamber Bottom w/Pin (Rockyn®) Ⓢ

- Ⓢ Bronze Lids must be used with Bronze Bonnets and Plastic Lids with Plastic Bonnets.
 Ⓢ Can be used only with Plastic Register Bonnet.
 Ⓢ Specify Spud size by letter designation:
 A. 5/8"; B. 5/8" x 3/4"; C. 3/4"; D. 3/4" x 1"; E. 1"; F. 1" x 1-1/4"
 For 3/4" Maincase specify 9" or 7-1/2" laying length. 7-1/2" length is available only with 3/4" spud.
 Ⓢ Requires a 1/4" drive tool (not supplied) for use with it. Ⓢ
 Ⓢ Specify registration by letter designation:
 A. U.S. Gallons; B. Cubic Feet; C. Cubic Meters; D. Other
 Ⓢ Included in measuring chamber complete. (Ill. #14)

ILL. No.	Name of Part
20	Measuring Chamber Outlet Gasket
21	Bottom Plate Gasket
22	Bottom Plate Liner
23A	Bottom Plate—Cast Iron
23B	Bottom Plate—Plastic
23C	Bottom Plate—Bronze
24A	Maincase Cap Screw—Stainless, Washerhead
24B	Maincase Cap Screw—Stainless, Washerhead-Drilled
25A	Maincase Capscrew—Bronze, Washerhead
25B	Maincase Capscrew—Bronze-Drilled, Washerhead-Drilled

Accessory Equipment

ILL. No.	Name of Part
26	Spanner Wrench
27	1/4" Drive Security Socket
28	Test Rings for Standard Register
29	Thread Protectors—5/8"-1"
30	Sealing Tool
31	Sealing Tool Die
32	Register Tester
33	Sealwire 2" Length
34	Lead Seal
35	Seal Wire 1000 ft. Spool, Not Shown
36	SRII Wrench

